



Home



Instructions




Ballot




Signout

View and vote on your ballot below.

You have two options to view candidate or issues details:

To view details for all choices, click on the  button next to the ballot question.

To view individual choice details click on the  button next to a choice.

To view the next page click on the  button

Archeology Division Election 2009

PAGE 1 of 1

PRESIDENT-ELECT 2-year term

Instructions: (Your vote is optional) Please vote for only one choice

Jay K. Johnson 

Rosemary A. Joyce 

MEMBER-AT-LARGE 2-year term

Instructions: (Your vote is optional) Please vote for only one choice

Stephen Edward Nash 

Rebecca Yamin 

PROGRAM CHAIR-ELECT 2-year term

Instructions: (Your vote is optional) Please vote for only one choice

Anna S. Agbe-Davies 

Scott R. Hutson 

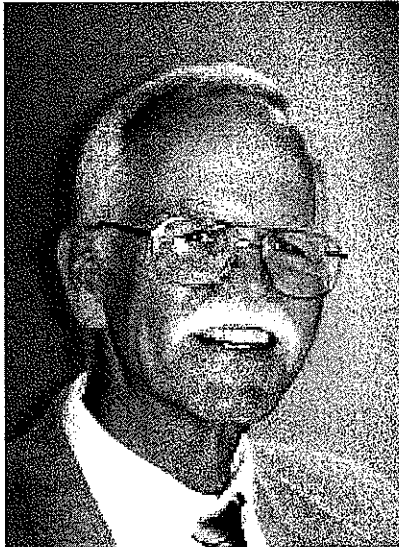


VOTE

Archeology Division Election 2009

View details for: PRESIDENT-ELECT 2-year term

Jay K. Johnson



JAY K. JOHNSON (PhD, Southern Illinois University-Carbondale, 1976) **Positions Held:** Director of the Center for Archaeological Research (2001-present) Unive...

[Read More ->](#)

Rosemary A. Joyce



ROSEMARY A. JOYCE (PhD, University of Illinois Urbana-Champaign, 1985) **Positions Held:** Professor and Chair (2006-present), Professor (2001-2005), Associate Profe...

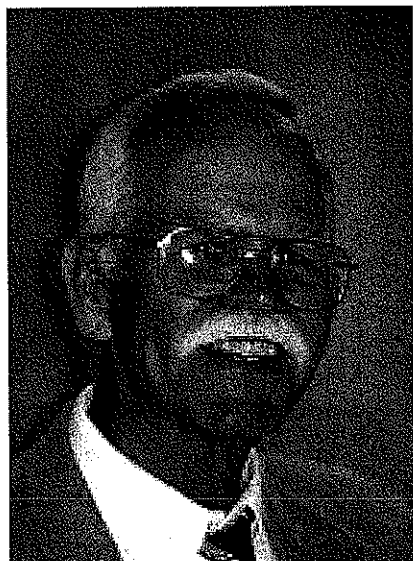
[Read More ->](#)

* Click on the Ballot tab to return to the Ballot

Archeology Division Election 2009

View details for: **PRESIDENT-ELECT 2-year term**

Jay K. Johnson



JAY K. JOHNSON (PhD, Southern Illinois University-Carbondale, 1976) **Positions Held:** Director of the Center for Archaeological Research (2001-present) University of Mississippi, Professor of Anthropology (1988-present) University of Mississippi; **Interests and/or Activities:** lithic analysis, remote sensing, ethnohistory; **Significant Publications:** *Remote Sensing in Archaeology: An Explicitly North American Perspective* (edited volume) University of Alabama Press, 2006; *The Development of Southeastern Archaeology* (edited volume) University of Alabama Press, 1993; *The Organization of Core Technology* (edited with Carol A. Morrow) Westview Press, Boulder, 1987.

Having served on the Executive Committee of the Archaeology Division of the American Anthropological Association (Director of Publications, 1998-2004), I have a good idea of the responsibilities and opportunities that the AD has in representing archaeologists within the AAA. Many of the issues facing archaeology can best be addressed within the broader perspective provided by the AAA and I look forward to the possibility of continuing the work of the AD as president elect.

* Click on the Ballot tab to return to the Ballot

[Next Candidate or Issue Profile >](#)

Archeology Division Election 2009

View details for: **PRESIDENT-ELECT 2-year term**

Rosemary A. Joyce



ROSEMARY A. JOYCE (PhD, University of Illinois Urbana-Champaign, 1985) **Positions Held:** Professor and Chair (2006-present), Professor (2001-2005), Associate Professor (1994-2001) and Director, Phoebe Hearst Museum of Anthropology (1994-1999) University of California, Berkeley; Associate Professor (1991-1994), Assistant Professor (1989-1991) Harvard University; Assistant Director (1986-1989), Assistant Curator (1985-1994) Peabody Museum, Harvard; **Interests and/or Activities:** gender and sexuality, cultural heritage, digital media; **Significant Publications:** *Ancient Bodies, Ancient Lives*, Thames and Hudson, 2008; *The Languages of Archaeology: Dialogue, Narrative, and Writing*, Blackwell, 2002; *Gender and Power in Prehispanic Mesoamerica*, University of Texas Press, 2001.

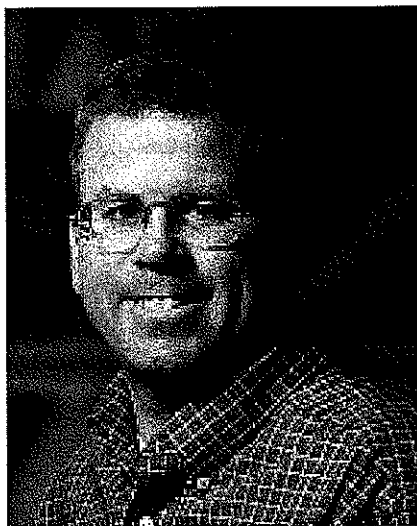
Anthropology needs archaeology. The Archeology Division of the AAA is the main venue where we can advocate for the continuation of that necessary relationship. I have served the AAA as Chair of the Kidder award committee (1998), as Program Editor for the Archeology Division (1999-2000) and for the Association for Feminist Anthropology (2003-2005), served on the AFA board (2004-2006) and on the Committee on the Status of Women (2005-2007). As a member of the AnthroSource Implementation Working Group (2003-2007), Associate Editor (2005-2007), and co-Editor for Book Reviews (2007-) of the *American Anthropologist*, I have particular knowledge of and concerns about the changing publication landscape that offers great potential for archaeologists if the unique nature of our publishing needs is represented. As an archaeologist who started my career in museums, and continues today to work in partnership with cultural heritage managers in Honduras, I see the public interface of anthropology as a site where archaeological anthropologists must continue to be leaders. As a member of the SAA, SHA, AIA, and WAC, I know that archaeology is doing well outside AAA. But anthropology needs our perspective and I would be honored to contribute to continuing the record of accomplishment of the AD.

* Click on the Ballot tab to return to the Ballot

Archeology Division Election 2009

View details for: MEMBER-AT-LARGE 2-year term

Stephen Edward Nash



STEPHEN EDWARD NASH (PhD, University of Arizona, 1997) **Positions Held:** Chair, Department of Anthropology and Curator of Archaeology, Denver Museum of Nature &...

[Read More ->](#)

Rebecca Yamin

REBECCA YAMIN (PhD, New York University, 1988) **Positions Held:** Principal Archeologist/Senior Associate (1992-Pres) John Milner Associates, Inc., Associate A...

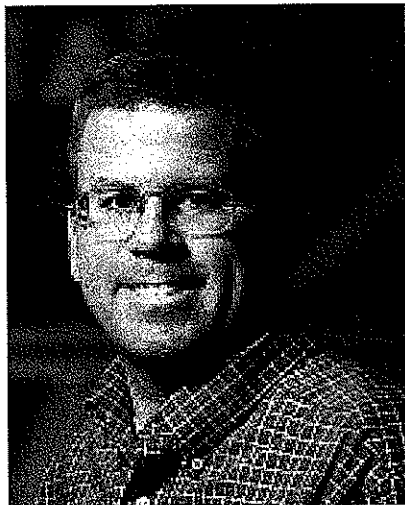
[Read More ->](#)

* Click on the Ballot tab to return to the Ballot

Archeology Division Election 2009

View details for: **MEMBER-AT-LARGE 2-year term**

Stephen Edward Nash



STEPHEN EDWARD NASH (PhD, University of Arizona, 1997) **Positions Held:** Chair, Department of Anthropology and Curator of Archaeology, Denver Museum of Nature & Science (2006 - present); Head of Collections, Department of Anthropology, The Field Museum (1999 - 2006); Post-Doctoral Research Specialist, Department of Anthropology, The Field Museum (1997 - 1999); **Interests and/or**

Activities: New science on old collections, archaeological chronometry, history of archaeology; **Significant Publications:** Curators, Collections, and Contexts: Anthropology at The Field Museum 1893 - 2002, with Gary M. Feinman, PhD), Fieldiana New Series No. 36, Chicago, 2003; It's About Time: Archaeological Dating in North America, University of

Utah Press, Salt Lake City, 2000; Time, Trees, and Prehistory: Tree-Ring Dating and the Development of North American Archaeology 1914 - 1945, Salt Lake City, 1999.

As a Practicing/Professional Member-at-large of the Archaeology Division Executive Committee, I would bring a perspective gleaned from more than two decades experience working in museums, with archaeological collections, and with anthropological archives. My research focuses on the continuing importance of understanding the history of anthropology and archaeology, particularly as these are represented in museum collections, as a precursor to the development of sound reconstructions of past human behavior. I acknowledge that archaeological research often requires more than a four-field anthropological approach; it is arguably the quintessentially multi-disciplinary field. Depending on the research in question, one might reasonably expect archaeologists to possess significant expertise in preservation law and ethics, curation and conservation, geology and geomorphology, statistics and foreign languages, among many others. The highly specialized nature of archaeological research in the 21st century has led many archaeologists to self-identify with disciplines other than anthropology. As such, the American Anthropological Association needs to continue engaging archaeological professionals through the Archaeology Division. My non-traditional, yet clearly archaeological, experience will allow me to provide the Executive Committee with an additional fund of ideas and balanced judgment pertinent to its various tasks and activities of the Archaeology Division.

* Click on the Ballot tab to return to the Ballot

[Next Candidate or Issue Profile >](#)

Archeology Division Election 2009

View details for: **MEMBER-AT-LARGE 2-year term**

Rebecca Yamin

REBECCA YAMIN (PhD, New York University, 1988) **Positions Held:** Principal Archeologist/Senior Associate (1992-Pres) John Milner Associates, Inc., Associate Archeologist (1988-1992) Ebasco Environmental, Assistant Curator (1987-1988) New Jersey State Museum (Morven project), Technical Editor/Archivist Historian (1982-1987) Parsons Brinkerhoff, Inc., Supervisory Archeologist and Assistant to the Director (1978-1981) Rutgers Archaeological Survey Office; **Interests and/or Activities:** urban archaeology, working-class history, landscape interpretation; **Significant Publications:** *Digging in the City of Brotherly Love, Stories from Philadelphia Archaeology*, Yale University Press, 2008; *Landscape Archaeology in Lower Manhattan* (co-author), in *Envisioning Landscape*, Left Coast Press, 2007; *From the Mythical to the Mundane: The Archaeological Angle on New York City's Five Points*, in *Cities of the World 1500-2000*, Maney Publishers, 2006; *Children's Strikes, Parents' Rights: Paterson and Five Points*, *International Journal of Historical Archaeology*, 2002; *Becoming New York: The Five Points Neighborhood*, editor, *Special Issue of Historical Archaeology*, 2001.

Over a 30-year career in historical archaeology I have worked in business, museum, and academic settings. I served for many years on the boards of the Council for Northeast Historical Archaeology (CNEHA) and the Professional Archaeologists of New York City (PANYC). I am currently a board member of Historic RittenhouseTown, the site of the first paper mill in America, and on the executive advisory committee for the Philadelphia Archaeological Forum. My diverse interests and wide professional network are particularly well suited to the AAA, which brings together so many subfields of anthropology. My most recent work in urban archaeology has made me aware of the need for interpretation that targets different audiences, and as a member-at-large I would be interested in working with others to identify ways to communicate the results of our research more effectively, especially to historians. I feel strongly that we owe our public(s) and our funding sources reports that make sense--that tell interesting stories and contribute in a serious way to the understanding of the past. I think historical archaeologists have a great deal to gain by working within the American Anthropological Association and would like to be part of that effort.

* Click on the Ballot tab to return to the Ballot

Archeology Division Election 2009

View details for: PROGRAM CHAIR-ELECT 2-year term

Anna S. Agbe-Davies



ANNA S. AGBE-DAVIES (PhD, University of Pennsylvania, 2004) **Positions Held:** Assistant Professor (2004-present) DePaul University; Adjunct Instructor (2004) Virgi...

[Read More ->](#)

Scott R. Hutson



SCOTT R. HUTSON (PhD, University of California-Berkeley, 2004) **Positions Held:** Assistant Professor (2007-Pres) Department of Anthropology, University of Kentuck...

[Read More ->](#)

* Click on the Ballot tab to return to the Ballot

Archeology Division Election 2009

View details for: **PROGRAM CHAIR-ELECT 2-year term**

Anna S. Agbe-Davies



ANNA S. AGBE-DAVIES (PhD, University of Pennsylvania, 2004) **Positions Held:** Assistant Professor (2004-present) DePaul University; Adjunct Instructor (2004) Virginia Commonwealth University; Staff Archaeologist (2000-2004); Project Archaeologist (1999-2000); Field Technician (1993-1995) The Colonial Williamsburg Foundation. **Interests and/or Activities:** public archaeology, classification and typology, archaeology of the African diaspora; **Significant Publications:** "Scales of Analysis, Scales of Value: Archaeology at Bush Hill House, Barbados" *The International Journal of Historical Archaeology*, In Press; "Practicing African American Archaeology in the Atlantic World" in *Archaeology of Atlantic Africa and the African Diaspora*, Akinwumi Ogundiran and Toyin Falola, eds, Indiana University Press, 2007. "Alternatives to

Traditional Models for the Classification and Analysis of Pipes of the Early Colonial Chesapeake" in *Between Dirt and Discussion: Methods, Methodology, and Interpretation in Historical Archaeology*, Steven N. Archer and Kevin M. Bartoy, eds, Springer, 2006.

Archaeology is an essential element of a vigorous and vibrant anthropology. As Archeology Division Program Editor my goal will be to seek out papers and sessions that reflect archaeology's contribution to the field as a whole and make our subdisciplinary colleagues say "wow!" Part of this may entail aggressively encouraging archaeologists to submit proposals, as well as soliciting invited sessions. I also anticipate working creatively with the various formats available (papers, workshops, roundtables, and posters) to increase the number and visibility of archaeological offerings at the annual meeting. I am further committed to working with the AD executive committee to identify Distinguished Lecturers whose work is at the forefront of archaeology theoretically and methodologically, and whose remarks reflect the dynamism and excitement of our research. My own research interests and institutional associations have allowed me to meet and work with colleagues at work in many sectors (museum, academic, CRM), time periods, and regions. I have had the opportunity to develop sessions for conferences large and small, as well as co-organize a regional meeting. It would be a pleasure to use these contacts and skills in the service of the Association and our Division.

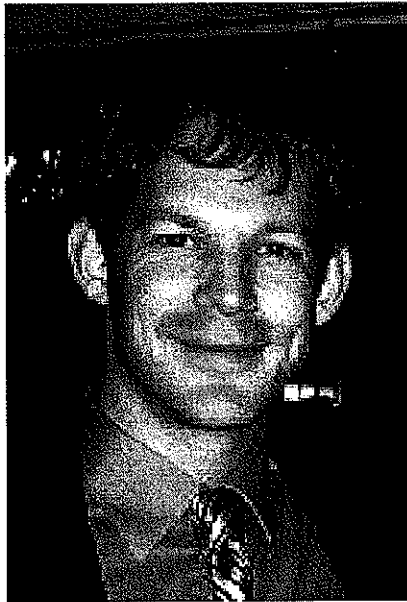
* Click on the Ballot tab to return to the Ballot

[Next Candidate or Issue Profile >](#)

Archeology Division Election 2009

View details for: **PROGRAM CHAIR-ELECT 2-year term**

Scott R. Hutson



SCOTT R. HUTSON (PhD, University of California-Berkeley, 2004) **Positions Held:** Assistant Professor (2007-Pres) Department of Anthropology, University of Kentucky; Fellow in Pre-Columbian Studies (2005-2006), Dumbarton Oaks; **Interests and/or Activities:** social archaeology, spatial analysis, Mesoamerica; **Significant Publications:** "City, Site, and Community: Nucleation and Dispersion at Chunchucmil and Classic Period Maya Urban Centers" (with D. Hixson, A. Magnoni, D. Mazeau, B. Dahlin) *Journal of Field Archaeology* 2008; "Cultural Logic and Practical Reason: The Structure of Discard in Ancient Maya Houselots" (with T. Stanton) *Cambridge Archaeological Journal* 2007; "Beyond the Buildings: Formation Processes of Ancient Maya Houselots and Methods for the Study of Non-architectural Space" (with T. Stanton, A. Magnoni, R. Terry, and J. Craner), *Journal of Anthropological Archaeology* 2007.

In the broadest sense, the Program Coordinator works to amplify the dialogue between archaeology and anthropology. The coordinator oversees what archaeological papers and sessions become part of the AAA program. Beyond this, she should also encourage more archaeologists to participate in the annual meetings. This takes hard work, not merely because of the cost of joining the AAA and attending the meetings, but because of the debate over the relationship between anthropology and archaeology. Despite the arrestingly polarized declarations produced by this debate, I see little value in such polarization, given recent trends in both archaeology and anthropology. Contemporary research currents have expanded the grounds of overlap among the already loosely-bound subfields. As archaeology goes public, its engagement with living communities intensifies, highlighting concerns that are fully ethnographic and fully entrenched in contemporary socio-politics. Furthermore, given archaeological expertise in topics of increasing relevance and cross-disciplinary concern, such as ecological degradation, cultural heritage, and colonialism, archaeology has much to contribute. As Program Coordinator, I will do my best to elicit and bring visibility to posters and papers that highlight the Archaeology Division's contributions to the AAA as a whole.

* Click on the Ballot tab to return to the Ballot