



View and vote on your ballot below.

You have two options to view candidate or issues details:

To view details for all choices, click on the button next to the ballot question.

To view individual choice details click on the button next to a choice.

To view the next page click on the **Click to Continue** button

Association for Feminist Anthropology Election 2009

PAGE 1 of 1

PRESIDENT 2-year term

Instructions: (Your vote is optional) Please vote for only one choice

Jane M. Henrici

Ara Wilson

TREASURER 2-year term

Instructions: (Your vote is optional) Please vote for only one choice

Sandra Faiman-Silva

Megan Sinnott

AT-LARGE BOARD MEMBER 2-year term

Instructions: (Your vote is optional) Please vote for exactly 2 choices

Rebecca Etz

Brigittine M. French

Sally Galman

Hillary J. Haldane

Karen Kapusta-Pofahl

Nia Parson

Margot Weiss

STUDENT REPRESENTATIVE 2-year term

Instructions: (Your vote is optional) Please vote for only one choice

Richard Joseph Martin

Jodi C. Nettleton

Misha Quill

R. Sophie Statzel



VOTE

Association for Feminist Anthropology Election 2009

View details for: PRESIDENT 2-year term

Jane M. Henrici



JANE M. HENRICI (PhD, University of Texas-Austin, 1996) **Positions Held:** Study Director, (January 2008-present) Institute for Women's Policy Research; Lectu...

[Read More ->](#)

Ara Wilson



ARA WILSON (PhD, City University of New York, 1997) **Positions Held:** Director, Program in the Study of Sexuality, Associate Professor, Wome...

[Read More ->](#)

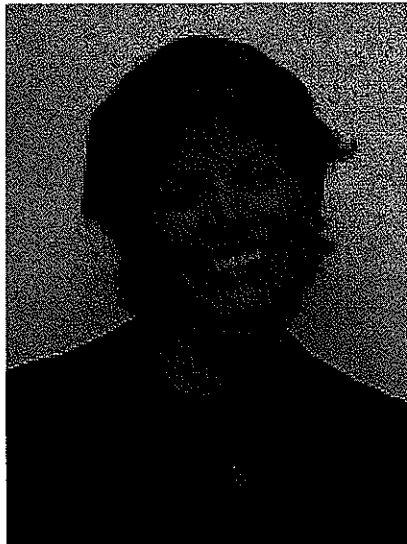
* Click on the Ballot tab to return to the Ballot

for minimum browser requirements click here

Association for Feminist Anthropology Election 2009

View details for: **PRESIDENT 2-year term**

Jane M. Henrici



JANE M. HENRICI (PhD, University of Texas-Austin, 1996) **Positions Held:** Study Director, (January 2008-present) Institute for Women's Policy Research; Lecturer, (January-May 2008) George Mason University Department of Sociology and Anthropology; Visiting Fulbright Scholar, (March-July 2006) Pontificia Universidad Católica del Perú, Department of Anthropology and Graduate Program in Gender Studies; Assistant Professor, (August 2001-December 2007) University of Memphis Department of Anthropology; Research Scientist, (2000-2001) "Welfare, Children, and Families: A Three-City Study," University of Texas at Austin Population Research Center and Center for Social Work Research; **Interests and/or Activities:** Gender, poverty, and policy in Peru and the United States;

Peruvian women and tourism, trade, and migration; nonprofits and NGOs.

Significant Publications: Free Trade, Alternative Trade, and Women in Peru: A First Look. *Journal of Developing Societies*, 2007; Agents of Change: Nonprofit Organization Workers following Welfare Reform, *Doing Without: Women and Work after Welfare Reform*, University of Arizona Press, 2006; Non-governmental Organizations, 'Fair Trade,' and Craft Producers: Exchanges South and North, *Visual Anthropology*, 2003

I am honored to be nominated for President of the Association for Feminist Anthropology. If elected, I would continue the AFA's inclusionist commitment to gendered equality, and its production of events and publications that cross boundaries among subfields, research areas, generations, and AAA sections. At the same time, I would move forward with efforts begun during my tenure as Executive Board Member At-Large (2006-2008) to expand our methods of sharing information as researchers, students, theoreticians, mentors, and politically engaged persons. I think we need to be able to learn more from and about one another's activities as professionals and as activists. I would like to work with the membership to develop ways to provide additional opportunities—some of which we have discussed but have not yet undertaken—such as possible joint section meetings, alternatives to formal AAA meeting events, and quick but periodic updates through news feeds and other tools. As a part of research, teaching, and outreach in Peru and in the U.S., I find that a feminist framing of learning about and working with others provides insights as well as responsibilities: to me, serving as AFA President would be a chance to work with others to encourage new ways to share both.

* Click on the Ballot tab to return to the Ballot

[Next Candidate or Issue Profile >](#)

Association for Feminist Anthropology Election 2009

View details for: **PRESIDENT 2-year term**

Ara Wilson



ARA WILSON (PhD, City University of New York, 1997) **Positions Held:** Director, Program in the Study of Sexuality, Associate Professor, Women's Studies and Cultural Anthropology (2006-present) Duke University; Associate Professor (2003-2006), Assistant Professor (1997-2003), Women's Studies, Ohio State University; **Interests and/or Activities:** transnational sexualities, gender and globalization, queer political economy; **Significant Publications:** *Intimate Economies of Bangkok: Tomboys, Tycoons and Avon Ladies in the Global City*, University of California Press, 2004, and "Feminism in the Space of the World Social Forum," *Journal of International Women's Studies*, 2007.

The Association of Feminist Anthropology can become the hub for critical interdisciplinary scholarship in North American anthropology. The AFA's central task has been to cultivate feminist knowledge production within anthropology and, being feminist, to try to do so in ways that recognize the politics of the academy (e.g., taking measures to counteract histories of exclusion). Through more than two decades of intellectual activism, the AFA has fostered four-field work on gender in ways that have transformed the discipline. This mandate will continue. At the same time, AFA members form a web of association that spans not only across the four fields but also across disciplinary divides and into the realm of public advocacy. Such links offer the potential for productive recombinations that have yet to be fully explored. Building on the foundations that feminist anthropology has so well established in the discipline, and on our memberships' rich networks, the AFA is ready to embrace the role of curator of critical interdisciplinary conversations. I want to see the AFA do this, by bringing a feminist lens to new objects of study or by recasting established feminist subjects through new questions about geography, power, knowledge, and humanity.

* Click on the Ballot tab to return to the Ballot



Home



Instructions



Ballot



Signout

[Return to the Ballot](#)

Association for Feminist Anthropology Election 2009

View details for: TREASURER 2-year term

Sandra Faiman-Silva



SANDRA FAIMAN-SILVA (PhD, Boston University, 1984) **Positions Held:** Professor of Anthropology (1992-Present), Bridgewater State College; Coordinator, L...

[Read More ->](#)

Megan Sinnott

MEGAN SINNOTT (PhD, University of Wisconsin-Madison, 2002) **Positions Held:** Assistant Professor of Women's Studies, Georgia State University

[Read More ->](#)

* Click on the Ballot tab to return to the Ballot

Association for Feminist Anthropology Election 2009

View details for: **TREASURER 2-year term**

Sandra Faiman-Silva



SANDRA FAIMAN-SILVA (PhD, Boston University, 1984) **Positions Held:** Professor of Anthropology (1992-Present), Bridgewater State College; Coordinator, Latin American and Caribbean Studies Program, Bridgewater St C (2007-Present); Grievance Officer, Bridgewater State College (2002-Present); **Interests and/or Activities:** gender, political economy, ethnicity; **Significant Publications:** *The Courage to Connect: Sexuality, Citizenship, and Community in Provincetown, U Illinois*, 2004; *Choctaws at the Crossroads: The Political Economy of Class and Culture in the Oklahoma Timber Region*, U Nebraska Paper 2000.

As a Professor of Anthropology at a public liberal arts college, I have had the opportunity to teach a variety of courses to undergraduate students, with emphasis on gender, women, political economy, Native North America, Latin America, and ethnicity. I have taught in the Bridgewater State College Anthropology program since 1987, where I helped build our Anthropology program from two full time faculty member to separate Department status, with five full time faculty and nearly fifty majors. I have taken students to Cuba and Belize, and serve as Coordinator of the Latin American and Caribbean Studies Program. I am active in my Union, the Massachusetts State College Association (an MTA/NEA affiliate). On campus I serve as our Union Chapter Secretary and Grievance Officer. I have been a member of the AFA, SOLGA, and CAE for many years, and I served a term as SOLGA Co-Chair, at a time when SOLGA was seeking full Section status in the AAA. I am confident that in my service to the AFA I will bring useful insights and forward-looking ideas, based on these experiences.

* Click on the Ballot tab to return to the Ballot

for minimum browser requirements click [here](#)

Association for Feminist Anthropology Election 2009

View details for: **TREASURER 2-year term**

Megan Sinnott

MEGAN SINNOTT (PhD, University of Wisconsin-Madison, 2002) **Positions Held:** Assistant Professor of Women's Studies, Georgia State University, (2006-present); Lecturer, Yale University, Women's, Gender and Sexuality Studies Program (2004-2006). **Interests and/or Activities:** sexuality studies, Thailand, Southeast Asian Studies, NGOs, ghost stories. **Significant Publications:** 2009 "Public Sex: The Geography of Female Homoeroticism and the(In)Visibility of Female Sexualities." In Ellen Lewin and William Leap (eds.). *Out in Public: Reinventing Gay/Lesbian Anthropology in a Globalizing World.* Wiley-Blackwell; 2008. "The Romance of the Queer: The Sexual and Gender Norms of Tom and Dee in Thailand." In Peter Jackson and Fran Martin (eds.). *Asia/Pacific Queer.* Urbana, IL: University of Illinois Press, pp. 131-148; 2007. "Gender Subjectivity: Dees and Toms in Thailand." In Abha Bhaiya, Evelyn Blackwood, and Saskia E. Wieringa (eds.). *Women's Sexualities and Masculinities in a Globalizing Asia.* New York: Palgrave, pp. 119-138.

* Click on the Ballot tab to return to the Ballot

[Next Candidate or Issue Profile >](#)

Association for Feminist Anthropology Election 2009

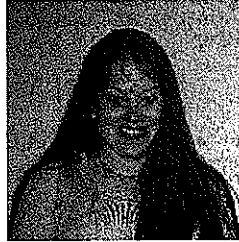
View details for: AT-LARGE BOARD MEMBER 2-year term

Rebecca Etz

REBECCA ETZ (PhD, Rutgers University, 2004) **Positions Held:** Instructor (2008-present) UMDNJ-Robert Wood Johnson Medical School; Qualitative Analyst, Evaluation T...

[Read More ->](#)

Brigitte M. French



BRIGITTINE M. FRENCH (PhD, University of Iowa, 2001) **Positions Held:** Assistant Professor of Anthropology (2005-present) Grinnell College, Mellon Postdo...

[Read More ->](#)

Sally Galman



SALLY GALMAN (PhD, University of Colorado-Boulder, 2005) **Positions Held:** Assistant Professor, (August 2005-Present) University of Massachusetts at Amherst;

[Read More ->](#)

Hillary J. Haldane

HILLARY J. HALDANE (PhD, University of California-2007). **Positions Held:** Assistant Professor (2008-present) Quinnipiac University. **Interests and/or Activ...**

[Read More ->](#)

Karen Kapusta-Pofahl

KAREN KAPUSTA-POFAHL (PhD, University of Minnesota, 2008) **Positions Held:** President-Elect/President (2005-2007) National Association of Student Anth...

[Read More ->](#)

Nia Parson



NIA PARSON (PhD, Rutgers University, 2005) **Positions Held:** Assistant Professor (2008-Pres) Southern Methodist University; Adjunct Faculty (2007-08) New York Univ...

[Read More ->](#)

Margot Weiss

MARGOT WEISS (PhD, Duke University, 2005) **Positions Held:** Assistant Professor (2008-present) Wesleyan University; Visiting Assistant Professor (2005-2008) Colleg...

[Read More ->](#)

Association for Feminist Anthropology Election 2009

View details for: **AT-LARGE BOARD MEMBER 2-year term**

Rebecca Etz

REBECCA ETZ (PhD, Rutgers University, 2004) **Positions Held:** Instructor (2008-present) UMDNJ-Robert Wood Johnson Medical School; Qualitative Analyst, Evaluation Team (2006-present) RWJF Prescription for Health Initiative; Postdoctoral Fellow (2006-2008) UMDNJ-Robert Wood Johnson Medical School; Visiting Assistant Professor (2005-2006) Rutgers University; **Interests and/or Activities:** organized/presented presidential session on Public Anthropology for 2007 AAA meetings; organized/presenting workshop on designing mixed qualitative and quantitative research in primary care for 2008 meeting of Society of General Internal Medicine; 2008 visiting senior scholar at the Robert Graham Center for policy studies in primary care; 2008 Levitt Lectureship Guest at University of Colorado Health Sciences Center; consultant and trainer of qualitative methods to fieldworkers in University of Colorado Behavioral Sciences department; active participant in annual Lavender Languages conference; research interests community, access to healthcare, data models for primary care, patient centered medical home, community based participatory research, inequalities, methods, lesbian and gay studies, interdisciplinarity; **Significant Publications:** Bridging Primary Care Practices and Communities to Promote Healthy Behaviors. *Amer J of Prev Med.* 2008;35(5S):S390-397; Fidelity versus Flexibility: Translating evidence-based Research into practice. *Amer J of Prev Med.* 2008;35(5S):S381-389 (with Deborah Cohen, PhD); Playing Nice with IRBs (with Lawrence Fischer, MD) *Health Services Research*, in process; Social Capital is in the Care (with Barbara DiCicco-Bloom, RN) *J of Nursing*, in process.

Since the 1980s, my work reflects a sustained commitment to activism, mentoring and outreach both within anthropology and within my neighborhoods. With every move in my research – from homeless women in Pennsylvania, to lesbian communities in New Zealand, to access to healthcare in the US – I have found a home in AFA as first and foremost a feminist scholar.

Presenting/organizing AAA sessions for the past 15 years, I have returned to AFA as a source of like-minded colleagues, advice and mentoring. It is time to return the favor. I believe AFA stands for what I do: promoting strong and vital feminist research, able to affect the course of our discipline; fostering insights of use to those both inside and outside of the academy; creating work that is politically progressive and concerned with inequality; demonstrating interest in what we can learn from groups around the world and the person right next door. I believe the strength of AFA is in its openness to cross-generational and cross-disciplinary collaborations, to embracing the hard work that equal commitment theory and practice embodies. As a board member, I would draw on previous collaborations with members of SOLGA, SMA, AES, ASAO and SANA, continuing this effort.

* Click on the Ballot tab to return to the Ballot

[Next Candidate or Issue Profile >](#)

Association for Feminist Anthropology Election 2009

View details for: **AT-LARGE BOARD MEMBER 2-year term**

Brigitte M. French



BRIGITTINE M. FRENCH (PhD, University of Iowa, 2001) **Positions Held:** Assistant Professor of Anthropology (2005-present) Grinnell College, Mellon Postdoctoral Fellow (2003-2005) Grinnell College, Visiting Assistant Professor of Anthropology and Women's Studies (2001-2003) University of Iowa; **Interests and/or Activities:** nationalism, testimonial discourse, history of anthropological theory, language ideologies; **Significant Publications:** Maya Ethnolinguistic Identity Projects: Between Violence and Cultural Rights in Highland Guatemala, University of Arizona Press, forthcoming; "We're All Irish: Transforming Identity in a Midwestern Community," *New Hibernia Review*, 2007; "Partial Truths and Gendered Histories: Ruth Bunzel in American Anthropology," *Journal of Anthropological Research*, 2005.

forthcoming; "We're All Irish: Transforming Identity in a Midwestern Community," *New Hibernia Review*, 2007; "Partial Truths and Gendered Histories: Ruth Bunzel in American Anthropology," *Journal of Anthropological Research*, 2005.

I have been a member of the AFA for over a decade because feminist principles infuse the kind of anthropology I do, teach, and hope to advance in the discipline. My work is carefully attentive to and critical of collective claims of "sameness" and "difference" within multiethnic, hierarchical national contexts (in particular, Guatemala and Ireland). As a board member, I will work to extend the influence of feminist anthropology across the subfields, a commitment that is enhanced by my four-fields training and faculty position in a four-fields department. More specifically, I will work to increase the AFA membership, to organize AFA curricular development initiatives, and to develop AFA-supported scholarly collaboration across the subfields at the institutional level. Overall, I hope to highlight and broaden the vibrancy of feminist epistemologies within the discipline among students, faculty, and practitioners.

* Click on the Ballot tab to return to the Ballot

[Next Candidate or Issue Profile >](#)

Association for Feminist Anthropology Election 2009

View details for: **AT-LARGE BOARD MEMBER 2-year term**

Sally Galman



SALLY GALMAN (PhD, University of Colorado-Boulder, 2005) **Positions Held:** Assistant Professor, (August 2005-Present) University of Massachusetts at Amherst; **Interests and/or Activities:** Arts-based research, identity and the professions, the graphic novel as text genre in anthropology; **Significant Publications:** Doth the lady protest too much? Pre-service teachers, identity and the experience of dissonance as a catalyst for development, *Teaching and Teacher Education*, 2008; The truthful messenger: Visual methods and representation in qualitative research in education, *Qualitative Research*, 2007; *Shane the Lone Ethnographer: A Beginner's Guide to Ethnography Research*, Alta Mira Press, 2007.

I am interested in exploring and problem-solving issues related to the increasingly gendered discourses around identity and work and the pragmatic economic realities facing new scholars and students. Similarly, I see a need for increasingly nuanced ways of imagining the profession, and its work, in the current climate of radical structural shift. As a junior scholar I am still a work in progress, learning what it means to be a feminist anthropologist in my research, teaching and outreach as a scholar, as well as finding ways to make my experience (and that of so many others) as a working mother of two small children more visible in my scholarly work and life as a member of the academic community.

* Click on the Ballot tab to return to the Ballot

[Next Candidate or Issue Profile >](#)

Association for Feminist Anthropology Election 2009

View details for: **AT-LARGE BOARD MEMBER 2-year term**

Hillary J. Haldane

HILLARY J. HALDANE (PhD, University of California-2007). **Positions Held:** Assistant Professor (2008-present) Quinnipiac University. **Interests and/or Activities:** gender violence, indigenous rights, Oceania. **Significant Publications:** "Varying Perspectives on the Treatment of Domestic Violence in New Zealand" *Practicing Anthropology*, 2008; "The Provision of Culturally-Consonant Care for Victims of Family Violence in Aotearoa/New Zealand" revised for *Global Public Health*; "Transnational Theories, Local Practices: Examining the Front Lines of Gender Based Violence" under review.

My teaching, research and activism have long been informed by the important work carried out by feminist anthropologists. My research concerns the comparative perspectives of front-line family violence workers in New Zealand and the United States. Many of the workers who collaborate with me see feminism as a vital and critical worldview. Yet, as a teacher I have noticed how my students today see themselves living in a "post-feminist" world at the same time inequalities of all kinds are increasing. The AFA membership and supporters are well-positioned to tackle some of the world's most pressing issues by invigorating our students to see feminism as a framework for social justice and "doing good" in the world.

* Click on the Ballot tab to return to the Ballot

[Next Candidate or Issue Profile >](#)

Association for Feminist Anthropology Election 2009

View details for: **AT-LARGE BOARD MEMBER 2-year term**

Karen Kapusta-Pofahl

KAREN KAPUSTA-POFAHL (PhD, University of Minnesota, 2008)

Positions Held: President-Elect/President (2005-2007) National Association of Student Anthropologists (AAA section); Women's Studies Department Curriculum Committee member (2001-2003) University of Minnesota; Sociocultural Co-President (2002-2003) Anthropology Graduate Student Organization, University of Minnesota; **Interests and/or Activities:** Feminist anthropology, political anthropology, expertise/knowledge production. **Significant Publications:** (Co-authored with Hana Hašková and Marta Kolařová) "Influence and Marginality in Formalized and Informal Women's Civic Organizing" in Hall, Timothy and Rosie Read, eds, *Changes in the Heart of Europe: Recent Ethnographies of Czechs, Slovaks, Roma, and Sorbs*, Ibidim-Verlag: Stuttgart, Germany 2006.

Membership on the AFA Executive Board provides an excellent opportunity to participate in activities to increase the presence and influence of feminist anthropology within the AAA. The AFA enjoys visibility as a section, and I would like to do my part to maintain and increase this visibility by being part of the section decision-making process. As a section member, the AFA has played a key role in providing me with opportunities and information, particularly through the active list-serv. I would like to see the AFA maintain this valuable resource. I would also like to see *Voices* gain further impact as a section journal and beyond. The AFA has a vital role to play at AAA meetings—making decisions at the organizational level, sponsoring sessions, and providing valuable workshops and other events to members. Workshops provide forums for more sustained attention to issues that the AFA determines to be of critical importance to the AAA membership. I have participated in some very stimulating discussions at AFA sponsored sessions and am interested in discussing further ways in which such conversations can be sustained in the various forums available to us. The AFA contributes critical perspectives on organizational and world affairs. It would be an honor to participate.

* Click on the Ballot tab to return to the Ballot

[Next Candidate or Issue Profile >](#)

Association for Feminist Anthropology Election 2009

View details for: **AT-LARGE BOARD MEMBER 2-year term**

Nia Parson



NIA PARSON (PhD, Rutgers University, 2005)

Positions Held: Assistant Professor (2008-Pres) Southern Methodist University; Adjunct Faculty (2007-08) New York University; NIMH Postdoctoral Fellow (2005-07) Institute for Health, Rutgers University; Bevier Graduate Fellow/Institute for Research on Women Fellow (2004-05), Rutgers University;

Interests and/or Activities: gender violence, health, SMU Women's and Gender Studies Council member **Significant Publications:** Book manuscript in process: *Traumatic States: Gender Violence, Suffering and Survival in Chile*; Under review at *American Ethnologist*: "The Structures of Intimate Violence and Gendered Citizenship in Chile"; "Under

revision for resubmission to *Medical Anthropology Quarterly*: "Intimate Abuse, Gendered Expectations of the Self, and Psychological Distress in Chile"

I am committed to feminist anthropology in my research and scholarship on the relationships of women's intimate experiences of violence, health, and local and global processes. I have researched these issues in Santiago, Chile, funded by Wenner-Gren Foundation for Anthropological Research and Fulbright-Hays Fellowships, and in New Jersey, funded by a National Institute for Mental Health postdoctoral fellowship. I am currently working on a book manuscript based on my work in Chile, entitled *Traumatic States: Gender Violence, Suffering and Survival in Chile*, as well as several articles. As a member of the board, I would be eager to collaborate to achieve important goals of the AFA. I would endeavor to bring my commitment to feminist anthropology, both in theory and in practice, to my work as an AFA board member. I have experience as a member of the Women's and Gender Studies Council at SMU, and my past affiliations with various anthropology departments at Rutgers, NYU, and Princeton, inform my practice as well. I would work to further specific goals of the AFA, including sponsoring innovative panels for the AAA, highlighting the work of the membership and feminist anthropology's contributions to the discipline as a whole, and by helping with *Voices*.

* Click on the Ballot tab to return to the Ballot

[Next Candidate or Issue Profile >](#)

Association for Feminist Anthropology Election 2009

View details for: **AT-LARGE BOARD MEMBER 2-year term**

Margot Weiss

MARGOT WEISS (PhD, Duke University, 2005) **Positions Held:** Assistant Professor (2008-present) Wesleyan University; Visiting Assistant Professor (2005-2008) College of William and Mary; Duke University; Sweet Briar College; **Interests and/or Activities:** intersections of queer, feminist, and materialist approaches to sexuality; performance studies; sexual politics; capitalism and culture; US; **Significant Publications:** *Techniques of Pleasure, Scenes of Play: SM in the San Francisco Bay Area*, Duke University Press, under contract; "Rumsfeld!: Consensual BDSM and 'Sadomasochistic' Torture at Abu Ghraib," *Out in Public*, in press; "Gay Shame and BDSM Pride: Neoliberalism, Privacy and Sexual Politics," *Radical History Review*, 2008; "Working at Play: BDSM Sexuality in the San Francisco Bay Area," *Anthropologica*, 2006.

I'd like to work on forging stronger connections between AFA and other minoritarian AAA sections; advancing scholarship on gender, race, sexuality, class, nation and other axes of difference; and helping to build a coalitional community of feminist scholars across the AAA. I've served on SOLGA's program committee for the past five years, and would like to use this experience to recognize and support innovative, intersectional feminist scholarship.

* Click on the Ballot tab to return to the Ballot

[Return to the Ballot](#)

Association for Feminist Anthropology Election 2009

View details for: STUDENT REPRESENTATIVE 2-year term

Richard Joseph Martin



RICHARD JOSEPH MARTIN (PhD, Candidate Princeton University; BA, Columbia University, 2004) **Positions Held:** Graduate Student Government Departmental Representativ...

[Read More ->](#)

Jodi C. Nettleton

JODI C. NETTLETON (Doctoral Candidate, University of South Florida, 2009; MA, Women's Studies, University of South Florida, 2009) **Positions Held:** Adju...

[Read More ->](#)

Misha Quill

MISHA QUILL (MA, University of Iowa, anticipated spring 2009; BA, College of St Catherine, 2000); **Positions Held:** Teaching Assistant/ Instructor (...)

[Read More ->](#)

R. Sophie Statzel



R. SOPHIE STATZEL (Doctoral student, City University of New York, 2006- present, expected candidacy May 2009); **Positions Held:** Adjunct Professor (Sept. 2006 &nda...

[Read More ->](#)

Association for Feminist Anthropology Election 2009

View details for: **STUDENT REPRESENTATIVE 2-year term**

Richard Joseph Martin



RICHARD JOSEPH MARTIN (PhD, Candidate Princeton University; BA, Columbia University, 2004)
Positions Held: Graduate Student Government Departmental Representative (2005-7); Co-Organizer for Sessions at 2006 and 2007 Annual Meetings
Interests and/or Activities: exchange, ritual, sexuality.

As student seat, I would pursue discussions and events related to the future of feminist anthropology. Key questions are: how to better integrate feminist insights and concerns into teaching and research, especially in courses and works not specifically focusing on issues of gender or sexuality? To what extent can we think of feminist anthropology as a coherent body of work within the discipline, and what are the new directions in which "we" are heading? How do historical feminist concerns intersect, or not, with contemporary problems? I am especially interested in fostering cross-generational dialogue on these issues.

* Click on the Ballot tab to return to the Ballot

[Next Candidate or Issue Profile >](#)

Association for Feminist Anthropology Election 2009

View details for: **STUDENT REPRESENTATIVE 2-year term**

Jodi C. Nettleton

JODI C. NETTLETON (Doctoral Candidate, University of South Florida, 2009; MA, Women's Studies, University of South Florida, 2009) **Positions Held:** Adjunct Professor (2008-present) Eckerd College, Adjunct Professor (2004-2008) University of South Florida, Department of Women's Studies. **Interest and/or Activities:** Women's Health, Addiction and Recovery, Autoethnographic research methods, HIV/AIDS. **Significant Publications:** Dispelling Myths and Expanding Perspectives in Sexuality (with Marilyn Myerson, Ph.D. & Allison Brimmer, Ph.D.), American Sexuality Magazine, 2004; Lesbian Sex Behind Bars: Identity and Function, The Newsletter of the AIS and Anthropology Research Group, July 2004; HIV Testing Services Offered to Incarcerated Women in a Florida County Jail, Master's Thesis, 2004.

The research, theory and pedagogy of feminist anthropology have inspired my educational pursuits, my research and my teaching choices throughout my career. Like many students, I am indebted to those foremothers of feminist anthropology who fought for the inclusion of feminist perspectives in the anthropological canon. Feminist methodologies, though complementary to anthropology, are not always visible in the standard curriculum despite our most ardent efforts. Through the work of the Association for Feminist Anthropology, omissions and misrepresentations of feminist theory and practice can be challenged.

Today, the global community faces a new era of political, economic and social conditions. Feminist values such as inclusion of diverse perspectives and an understanding of issues related to gender, class, ethnicity and sexual orientation are essential. As a member of the AFA board, I would support workshops and roundtable sessions that would encourage new feminist scholarship on solutions to the current economic and political crises. I also think it is important that the AFA continue to provide resources to those working on feminist research or teaching feminist courses. I look forward to being the voice of the emerging feminist scholar on the AFA board. I would be very proud to serve the only organization completely focused on supporting and fostering feminist anthropology.

* Click on the Ballot tab to return to the Ballot

[Next Candidate or Issue Profile >](#)

Association for Feminist Anthropology Election 2009

View details for: **STUDENT REPRESENTATIVE 2-year term**

Misha Quill

MISHA QUILL (MA, University of Iowa, anticipated spring 2009; BA, College of St Catherine, 2000); **Positions Held:** Teaching Assistant/ Instructor (2007-present) University of Iowa; Fundraising/ Communications Manager (2007) Center for Victims of Torture; Project Manager (2000-2007) American Public Media/ American RadioWorks; **Interests and/or Activities:** gender, citizenship, migration, identity and post-conflict cultural change; conducted fieldwork in Ireland among asylum-seekers, refugees and NGO staff.

I have nominated myself for the student representative position on the AFA for three reasons: 1) I genuinely believe in the work of the AFA; 2) I believe my years of non-academic professional work have provided me with skills that might be useful to the AFA Executive Board; and 3) I know that I have a lot to learn about the discipline and hope to learn more by getting involved. I'm a long-time feminist and would like to see the AFA working on panels that would bring more young anthropologists into the AFA.

* Click on the Ballot tab to return to the Ballot

Association for Feminist Anthropology Election 2009

View details for: **STUDENT REPRESENTATIVE 2-year term**

R. Sophie Statzel



R. SOPHIE STATZEL (Doctoral student, City University of New York, 2006- present, expected candidacy May 2009); **Positions Held:** Adjunct Professor (Sept. 2006 - present) Baruch College, City University of New York; Teaching Assistant (2004-2005) Department of Anthropology and Sociology, the University of Toronto; Research Assistant (2004-2006) Ontario Institute for Studies in Education, University of Toronto; **Interests and/or Activities:** Panel Co-Organizer and co-chair with Risa Cromer. The Politics of Kinship and the Family in Crisis. Double panel session, AFA Sponsored Panel/American Anthropological Association Annual Meeting, November 2008; Conference Co-organizer and co-chair with Mary Taylor, Toward A Comparative Discussion on Rightist Movements. Two-day conference with twenty-five presentations and two keynote addresses, CUNY Graduate Center, March

2008; interests: religion, gender, nationalism; **Significant Publications:** "Cybersupremacy: the new face and form of white supremacist activism," in *Tactics in Hard Times: Practices and Spaces of New Media* (editor Megan Boler), Boston: MIT Press, 2008; "The Apartheid Conscience: Gender, Race, and Re-imagining the White Nation in Cyberspace," *Ethnic Studies Review*. 2006. "Genocide, Liberation, and Self-Determination; The Politics of Feminism and Abortion," *Voices of a New Generation; A Feminist Anthology* (editors Constance Faulkner and Sara Weir) Boston: Allyn & Bacon/Longman, 2006.

If elected student representative for the Association for Feminist Anthropologists I will focus on increasing opportunities for graduate students to participate in the AFA and the AAA. I will work with the board to coordinate events at the annual AAA meetings that encourage and increase interactions between feminist faculty and students to mentor students in their academic careers. Given the current academic economic climate I will place a special emphasis on career development for feminist anthropology doctoral students who intend to pursue academic or non-academic careers. A goal of my tenure on the board will be to facilitate student participation in the AFA and to provide skills sharing opportunities between faculty and graduate students, particularly around publishing and the job search. As an Anthropology doctoral student at the City University of New York I am familiar with the variety of challenges facing students today around maneuvering through doctoral programs and the discipline. My research interests include nationalist movements and religious mobilizations in North America and critical race theory. I understand the importance of understanding the intersections of race, class, gender, and sexuality and will work to ensure the AFA reflects such an intersectional analysis.

* Click on the Ballot tab to return to the Ballot

[Next Candidate or Issue Profile >](#)