



Home



Instructions




Ballot



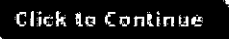
Signout

View and vote on your ballot below.

You have two options to view candidate or issues details:

To view details for all choices, click on the  button next to the ballot question.

To view individual choice details click on the  button next to a choice.

To view the next page click on the  button

## Association of Latina and Latino Anthropologists Election 2009

PAGE 1 of 1

### PRESIDENT-ELECT 1-year term as president-elect, 2-year term as president

Instructions: (Your vote is optional) Please vote for only one choice

Miguel Díaz-Barriga 

Alejandro Lugo 

Luis F.B. Plascencia 

### MEMBER-AT-LARGE 3-year term

Instructions: (Your vote is optional) Please vote for exactly 3 choices

Michael Montoya 

Mariela Nuñez-Janes 

Guillermina G. Nunez 

Patricia Tovar 

### STUDENT REPRESENTATIVE-MEMBER-AT-LARGE 2-year term

Instructions: (Your vote is optional) Please vote for only one choice

María Elena Cruz 



VOTE

# Association of Latina and Latino Anthropologists Election 2009

View details for: PRESIDENT-ELECT 1-year term as president-elect, 2-year term as president

## Miguel Díaz-Barriga



**MIGUEL DÍAZ-BARRIGA** (PhD, Stanford University, 1991) **Positions Held:** Professor of Anthropology (1989-Pres) Swarthmore College; Department Chair,

[Read More ->](#)

## Alejandro Lugo

**ALEJANDRO LUGO** (PhD, Stanford University, 1995) **Positions Held:** Associate Department Head and Director of Graduate Studies in Anthropology (2006-Prese...

[Read More ->](#)

## Luis F.B. Plascencia



**LUIS F. B. PLASCENCIA** (PhD, The University of Texas-Austin, 2005). **Positions Held:** Assistant Professor (2005 to present) Arizona State University; Project Coord...

[Read More ->](#)

\* Click on the Ballot tab to return to the Ballot

## Association of Latina and Latino Anthropologists Election 2009

View details for: **PRESIDENT-ELECT 1-year term as president-elect, 2-year term as president**

### Miguel Díaz-Barriga



**MIGUEL DÍAZ-BARRIGA** (PhD, Stanford University, 1991) **Positions Held:** Professor of Anthropology (1989-Pres) Swarthmore College; Department Chair, Department of Sociology and Anthropology (2002-2008) Swarthmore College; Coordinator, Mellon Mays Undergraduate Program (1996-Pres) Swarthmore College; Chair, Committee on Minority Issues in Anthropology (2002-2005) American Anthropology Association; **Interests and/or Activities:** Latino/a and Latin American Studies, conducting research on the construction of the border wall in South Texas;

**Significant Publications:** *Distracción: Notes on Cultural Citizenship, Visual Ethnography, and Mexican Migration to Pennsylvania*, *Visual Anthropology Review*, 2008; *Is Community Based Video Good for Visual Anthropology*, *Anthropology News*, 2007; *Senator Barack Obama and Immigration Reform* (with Margaret E. Dorsey, PhD) *Journal of Black Studies*, 2007.

ALLA has continued to serve the AAAs well by organizing superb panels on Latino/a issues, providing a range of mentoring opportunities for graduate students including workshops, and choosing on an annual basis the best book on Latino/a anthropology (I chaired the award committee last year). In the meantime we have found ourselves, at times, bogged down on internal AAA politics such as the relationship of the Sections to the Executive Committee. I would like to see ALLA continue to conduct efficiently the tasks that it has done well--including organizing panels, mentoring graduate students, and awarding the book prize--while expanding its role in public anthropology. I would encourage ALLA to have a more vigorous voice on current issues confronting Latino/a populations, including but not limited to immigration policies, the construction of the border wall, and access to health care. This effort can involve modest efforts-- such as publishing position pieces in *Anthropology News*, looking for ways to engage the media, and promoting anthropological work and activities that engage and impact a wider audience outside of the academy. By carefully building on our past success, and recognizing/promoting our work in public anthropology, ALLA can continue to thrive while expanding on the already important role it plays in public anthropology.

\* Click on the Ballot tab to return to the Ballot

[Next Candidate or Issue Profile >](#)

## Association of Latina and Latino Anthropologists Election 2009

View details for: **PRESIDENT-ELECT 1-year term as president-elect, 2-year term as president**

### Alejandro Lugo

**ALEJANDRO LUGO** (PhD, Stanford University, 1995) **Positions Held:** Associate Department Head and Director of Graduate Studies in Anthropology (2006-Present), Associate Professor of Anthropology and Latina/Latino Studies (2002-Present), Assistant Professor of Anthropology (1996-2002)—all at the University of Illinois at Urbana-Champaign; **Interests and/or Activities:** culture and capitalism, border crossings, race and empire; **Significant Publications:** *Fragmented Lives, Assembled Parts: Culture, Capitalism, and Conquest at the U.S.-Mexico Border*, published by the University of Texas Press, 2008; "Photo Essay: Cruces", *South Atlantic Quarterly*, 2006; and *Gender Matters: Rereading Michelle Z. Rosaldo* (co-edited with Bill Maurer), University of Michigan Press, 2000.

Since 1996 I have had the experience of working with a wide range of socio-cultural colleagues as well as with colleagues in the other subfields. In my thirteen years at Illinois, I have served in more than thirty doctoral dissertation committees; I am currently advisor to eight doctoral students, six of them Latinos. I would like to bring this rich experience to my position as President of ALLA. I strongly believe that guaranteeing a viable and central presence of ALLA in the AAA in the next decade demands that all of us work tirelessly on the following bilateral strategy: on the one hand, we need to enrich our conversations with anthropologists from all subfields; and on the other hand, we do need to work even more tirelessly on the recruitment of Latinas and Latinos into Ph.D. Programs as well as on their retention and, ultimately, their graduation. By engaging our colleagues and administrators on the much-needed continuing contributions of Latina/o anthropologists to a socially and ethically relevant practice of our discipline, we will help ensure that both the AAA and departments across the nation consider seriously, as a matter of policy, the vitally important place of "the anthropology on and by Latinos," a field that is fundamentally crucial to a better understanding of the increasingly large Latino presence not only in the context of 21st century U.S.A. but also in the larger realm of all of the Americas.

\* Click on the Ballot tab to return to the Ballot

[Next Candidate or Issue Profile >](#)

# Association of Latina and Latino Anthropologists Election 2009

View details for: **PRESIDENT-ELECT 1-year term as president-elect, 2-year term as president**

## Luis F.B. Plascencia



**LUIS F. B. PLASCENCIA** (PhD, The University of Texas- Austin, 2005). **Positions Held:** Assistant Professor (2005 to present) Arizona State University; Project Coordinator/Research Associate (1995-2005) The University of Texas at Austin; Associate Director, (1995-2000) The Tomás Rivera Policy Institute; Project Coordinator/Research Associate, (1985-1991) LBJ School of Public Affairs; Policy & Budget Analyst (1982-1985) Office of the Governor, Texas; **Interests and/or Activities:** migration, citizenship, migrant contract worker programs ("bracero"/"guestworker" programs); **Significant Publications:** Plascencia, L.F.B., G.P. Freeman, and M. Setzler (2003), "The Decline of Barriers to Immigrant Economic and Political Rights in the

American States, 1977-2001," *International Migration Review*, 37(1):5-23, Freeman, G.P., L.F.B. Plascencia, S. González Baker, and M. Orozco (2002), "Explaining the Surge in Citizenship Applications in the 1990s: Lawful Permanent Residents in Texas," *Social Science Quarterly*, 83(4):1013-1025, Plascencia, Luis F.B. (2001), "State, County and Municipal Legislation," In *Encyclopedia of American Immigration*, Volume 2:518-522. Armonk, NY: M.E. Sharpe.

As President of the Association of Latina and Latino Anthropologists (ALLA), I would pursue a twofold strategy aimed at increasing the participation and visibility of Latina/o anthropologists, both students and faculty, in ALLA as well as in the governance and organization of AAA. I believe that the section can adopt a more assertive role in facilitating the nomination and election of Latinas/os to the multiple committees and commissions within AAA, and in increasing the ALLA membership. Both actions are necessary and mutually supportive. The ALLA Board must strategically plan and act in order to accomplish this. Consequently, as President I would use the annual meeting of the Board to initiate a discussion of how to achieve the above and formulate a plan of action to accomplish it—the ideas and commitments of the Board and the members are key in achieving this. One concrete target that I would like to pursue is to break the numerical ceiling of 200 for our section membership. Over the past years our membership has fluctuated between 148 and 198; I believe that we can increase our membership to between 220 and 230 within a year. I welcome your support and participation in achieving these ends.

\* Click on the Ballot tab to return to the Ballot

## Association of Latina and Latino Anthropologists Election 2009

View details for: MEMBER-AT-LARGE 3-year term

### Michael Montoya



**MICHAEL MONTOYA** (PhD, Stanford University, 2003)  
**Positions Held:** Assistant Professor (2004-Pres.)  
Departments of Chicano/Latino Studies and  
Anthropology, Univers...

[Read More ->](#)

### Mariela Nuñez-Janes



**MARIELA NUÑEZ-JANES** (PhD, University of New  
Mexico, 2003) **Positions Held:** Assistant Professor,  
Anthropology (2003-present) University of North Texas;

[Read More ->](#)

### Guillermina G. Nunez



**GUILLERMINA G. NUNEZ** (PhD, University of California-  
Riverside, 2006) **Positions Held:** UT El Paso IMPACT  
Faculty Leadership Fellow 2008-2009; Texas Compact  
Fellow ...

[Read More ->](#)

### Patricia Tovar

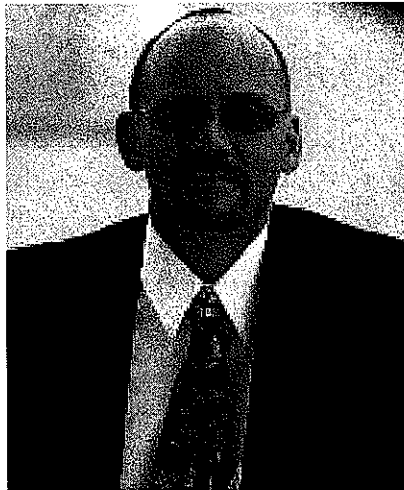
**Patricia Tovar** (PhD, CUNY, 1996) **Positions Held:** Associate Professor (2008-  
Pres.) John Jay, CUNY; Professor (2006-2008) Pontificia Universidad Javeriana, B...

[Read More ->](#)

## Association of Latina and Latino Anthropologists Election 2009

View details for: **MEMBER-AT-LARGE 3-year term**

### Michael Montoya



**MICHAEL MONTOYA** (PhD, Stanford University, 2003) **Positions Held:** Assistant Professor (2004-Pres.) Departments of Chicano/Latino Studies and Anthropology, University of California, Irvine; Affiliate Fellow (2004) Molecular Sciences Institute in Berkeley, CA; Associate Director (2001-2004) University of Wisconsin Institute on Race and Ethnicity. **Interests and/or Activities:** Medical anthropology and the social and cultural studies of science and technology; health disparities among Chicano/Latino communities; the US/Mexican border. **Significant Publications:** Bioethnic Conscription: Genes, Race and Mexicana/o Ethnicity in Diabetes Research. *Cultural Anthropology* 22(1) 2007; with Paradies, YC., and Fullerton, SM., Racialized Genetics and the Study of Complex Diseases: The thrifty genotype revisited. *Perspectives in Biology and Medicine* 50 (2) 2007; Diabetes. *Encyclopedia of Race and Racism*, John Moore (ed) The Gale Group/Macmillan Reference USA, Farmington Hills, MI, 2008.

In my work, I attempt 2 things. First, I seek to bridge disciplines, subdisciplines and interest areas related to race and health. I try to articulate the linkages between race, genes, and social inequality. Second, I seek to change the way we think about "knowledge" and "expertise" to include non reductionistic approaches and to rethink "community" as an epistemological framework for understanding. Finally, "until the life chances of privilege, occupation, education, wealth, and disease no longer follow a pattern that disfavors certain groups, associations like ALLA and other identity oriented professional groups will continue to be needed. Membership in one of those associations requires only an interest in, and affinity for, the ideals of a more just society and a recognition that understandings of culture, politics, and history can only occur through the faithful accounting of the contributions of Latino, African, Indigenous, Native, women, workers, the poor and other minoritized groups."

\* Click on the Ballot tab to return to the Ballot

Next Candidate or Issue Profile >

## Association of Latina and Latino Anthropologists Election 2009

View details for: **MEMBER-AT-LARGE 3-year term**

### Mariela Nuñez-Janes



**MARIELA NUÑEZ-JANES** (PhD, University of New Mexico, 2003) **Positions Held:** Assistant Professor, Anthropology (2003-present) University of North Texas; **Interests and/or Activities:** race, ethnicity, pedagogy, Latinos and education; **Significant Publications:** *Racismo. Qué es y cómo se afronta*, (with Aguado Odina, Teresa Ballesteros and Belén Velásquez et. al.), Madrid: Pearson Educación, 2007 ; "The Pedagogy of Teaching Online Graduate Courses in the Program of Applied Anthropology" (with Alicia Re Cruz) *Practicing Anthropology* 29 (1): 20-23, 2007; "Diversity as an Orientalist Discourse," *Ethnic Studies Review* 30(1): 41-56, 2007.

As ALLA's Member-at-Large, I will support and further disseminate the contributions of Latino/a anthropologists and represent our interests within AAA. My scholarship and ongoing work in ALLA and AAA attest to my commitment in engaged professional work. As a faculty member in an applied anthropology department my research and teaching in the areas of race, ethnicity, identity and Latino/a education involve interdisciplinary collaboration with scholars, practitioners and students. Our research projects about Latino/a youth and identity, pedagogy, and digital media and technology are guided by research methodologies, practices, and outcomes that are attentive and responsive to marginalized communities. I have worked diligently to promote the inclusion of Latino/a voices within AAA and to encourage collaboration among ALLA and other sections. I contributed to the organization of a mentoring event for students of color in my role as co-editor of ALLA's AN column and co-chair of the Mission Committee for CAE. In the role of Member-at-Large, I will work towards increasing ALLA's membership, strengthening our presence in the annual program, developing new mentoring activities and collaborations, and ensuring that the contributions, concerns, and interests of Latino/a anthropologists are represented.

\* Click on the Ballot tab to return to the Ballot

[Next Candidate or Issue Profile >](#)

## Association of Latina and Latino Anthropologists Election 2009

View details for: **MEMBER-AT-LARGE 3-year term**

### Guillermina G. Nunez



**GUILLERMINA G. NUNEZ** (PhD, University of California-Riverside, 2006) **Positions Held:** UT El Paso IMPACT Faculty Leadership Fellow 2008-2009; Texas Compact Fellow for Excellence in Service Learning 2007-2008; University of Texas, El Paso; U.S.-Mexico Border, urbanization, immigration; **Significant Publications:** The Political Ecology of the Colonias on the U.S.-Mexico Border: Human-Environmental Challenges and Community Responses in Southern New Mexico. Nunez-Mchiri, Guillermina G. *Southern Rural Sociology* 2009: 24(1): 67-91; The Border Poll Crew: Engaging Bilingual Youth in Local Elections in El Paso, Texas; *Practicing Anthropology*. Núñez, Guillermina G. and Alfonso Sanchez. 2008:30 (2):45-48. ; Entrapment Processes and Immigrant Communities in a Time of Heightened Border Vigilance. Núñez, Guillermina G. and Josiah McC. Heyman. *Human Organization*. 2007: 66(4):

356-364.

My name is Guillermina G. Núñez and I am seeking to be a member at large for the Association of Latina and Latino Anthropologist for this 2008-2009 year. I have actively participated in ALLA as a graduate student and now as professor of applied cultural anthropologist at UT El Paso. My research, teaching and service efforts focus on urbanization, immigration, and community building processes along the U.S.-Mexico border. I teach courses on applied, urban, and ethnographic methods in anthropology. Being part of ALLA seems like a great opportunity to meet and seek mentorship from other fellow Latina/o anthropologists, while also being of guidance and service to graduate and undergraduate students in the field. As a member at large in ALLA, I am interested in building a web-supported networking site for ALLA members to help stimulate networking and collaborative opportunities for colleagues and students. I am also greatly invested in helping to build the ALLA membership and in exploring ways of building community among the membership.

\* Click on the Ballot tab to return to the Ballot

[Next Candidate or Issue Profile >](#)

## Association of Latina and Latino Anthropologists Election 2009

View details for: **MEMBER-AT-LARGE 3-year term**

### Patricia Tovar

**Patricia Tovar** (PhD, CUNY, 1996) **Positions Held:** Associate Professor (2008-Pres.) John Jay, CUNY; Professor (2006-2008) Pontificia Universidad Javeriana, Bogotá; Head of the Social Anthropology section (2003-2006) Colombian Institute of Anthropology and History. **Interests and/or Activities:** h widowhood, mobility, forced displacement, violence, sexual and reproductive health, and gender and science (USA, Portugal, Colombia). **Significant Publications:** "Las viudas del conflicto armado en Colombia," ICANH, 2006; "Familia, género y Antropología en Colombia," ICANH, 2003.

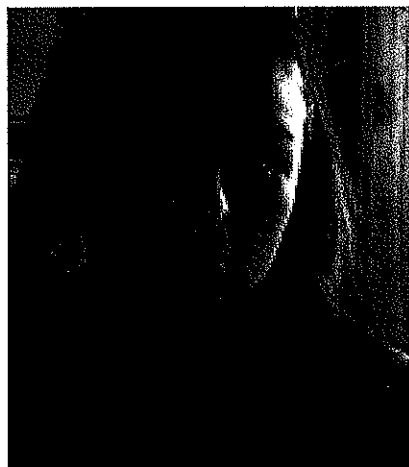
I have been fortunate to serve at a number of institutions (public and private universities in New York and Colombia, and at the Instituto Colombiano de Antropología e Historia), and in a number of roles (faculty member, researcher, and administrator). This breadth of experience well positions me to serve as member at large of ALLA. I have been an advocate for displaced populations, migrants, and for the advancement of Latino/as in the US. In my current position at John Jay College, I am developing initiatives that enrich the lives of students, preserving their interest in their own culture while simultaneously helping them achieve their educational and personal goals. As co-chair of the Colombia Section of the Latin American Studies Association, I have had the opportunity to dedicate myself to an intellectual community-building, sponsoring activities denouncing human rights abuses, and creating competitions to enhance awareness about Latin American scholarship. I believe ALLA plays a crucial role in not only furthering the development of engaged, and critical scholarship and praxis, but also in providing an important space so that we can continue to learn how to best serve our Community. I see myself as contributing to ALLA in many ways, including encouraging representation, disseminating information, and facilitating conversations about solutions for our perennial challenges.

\* Click on the Ballot tab to return to the Ballot

## Association of Latina and Latino Anthropologists Election 2009

View details for: STUDENT REPRESENTATIVE-MEMBER-AT-LARGE 2-year term

### María Elena Cruz



**María Elena Cruz** (PhD Candidate, University of Texas-Austin, 2008). **Positions Held:** Co-Vice President of Chicana/o and Latina/o Graduate Student Associati...

[Read More ->](#)

\* Click on the Ballot tab to return to the Ballot

## Association of Latina and Latino Anthropologists Election 2009

View details for: **STUDENT REPRESENTATIVE-MEMBER-AT-LARGE 2-year term**

### María Elena Cruz



**María Elena Cruz** (PhD Candidate, University of Texas-Austin, 2008). **Positions Held:** Co-Vice President of Chicana/o and Latina/o Graduate Student Association (CLGSA) (2006-2007) at the University of Texas, Austin. Peer reviewer for the journal of Anthropology & Education Quarterly (AEQ) (2006-2007) at the University of Texas, Austin. Recruitment Representative and member of the Minority Grad Forum for San Jose State University, (2004-2005).

**Interests and/or Activities:** Indigenous (Im) migration, to urban areas in Mexico and the U.S., Globalization, Capitalism, Gender, and Race.

**Significant Publications:** "Huichol Art A Commodification of the Sacred" McNair Scholars

Journal, Berkeley, CA 2002.

As a Student Representative for the Association of Latina and Latino Anthropologists (ALLA), I would represent and recruit students into ALLA and hope to strengthen students' participation in ALLA because I think students' input in the association greatly adds to the pool of social scientific knowledge and support already present. I would also be interested in continuing to develop mentoring sessions for students of color. I enjoy counseling and advising students, and I would very much like to continue working with a diverse group of faculty, staff, and students in ALLA. With the skills that I have accumulated in requirement, and organizing, I would like to continue to develop strategies with other graduate/undergraduate anthropology students to increase student participation within ALLA and the AAA meetings more broadly. Such strategies have included organizing student panels, student-professor workshops, journal peer reviews, and creating a student listserv. As a student representative, I will continue to develop strategies for student participation in collaboration with ALLA members by providing mechanisms for networking and stewardship amongst students and professors that includes promoting dialogue across sections within the AAA's and with potential new members. Occupying the position of student representative is a critical endeavor in the expansion of ALLA and the discipline at large. I will seek to continue crafting creative venues to increase student participation, recruitment and retention of Latina/o students to the discipline of anthropology and ALLA.