



Home



Instructions



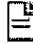
Ballot



Signout

View and vote on your ballot below.

You have two options to view candidate or issues details:

To view details for all choices, click on the  button next to the ballot question.

To view individual choice details click on the  button next to a choice.

To view the next page click on the  button

## Society for Medical Anthropology Election 2009

PAGE 1 of 1

### TREASURER 3-year term

Instructions: (Your vote is optional) Please vote for only one choice

Elizabeth Cartwright 

Rebecca J. Lester 

### SECRETARY 3-year term

Instructions: (Your vote is optional) Please vote for only one choice

M. Cameron Hay-Rollins 

Jennifer S. Hirsch 

### EXECUTIVE BOARD SLATE #1 3-year term

Instructions: (Your vote is optional) Please vote for only one choice

Holly F. Mathews 

Marsha B. Quinlan 

### EXECUTIVE BOARD SLATE #2 3-year term

Instructions: (Your vote is optional) Please vote for only one choice

Vincent E. Gil 

Robert T. Trotter II 

### EXECUTIVE BOARD SLATE #3 3-year term

Instructions: (Your vote is optional) Please vote for only one choice

P. Sean Brotherton 

Christopher Jones 



VOTE

## Society for Medical Anthropology Election 2009

View details for: TREASURER 3-year term

### Elizabeth Cartwright



**ELIZABETH CARTWRIGHT** (PhD, University of Arizona, 1998) **Positions Held:** Associate Professor and Director of the Hispanic Heal...

[Read More ->](#)

### Rebecca J. Lester



**REBECCA J. LESTER** (PhD, Univeristy of California- San Diego, 1998) **Positions Held:** Assistant Professor of Anthropology (2002-present) Washington University in St...

[Read More ->](#)

\* Click on the Ballot tab to return to the Ballot

## Society for Medical Anthropology Election 2009

View details for: **TREASURER 3-year term**

### Elizabeth Cartwright



**ELIZABETH CARTWRIGHT** (PhD, University of Arizona, 1998) **Positions Held:** Associate Professor and Director of the Hispanic Health Projects (1999-present) Department of Anthropology, Idaho State University; Instructor (2008-2010) National Science Foundation Short Course on Research Methods; Senior Lecturer, Honorary (2008-present) School of

Psychology, Psychiatry, and Psychological Medicine, Faculty of Medicine, Nursing and Health Sciences, Monash University, Melbourne, Australia; **Interests and/or Activities:** immigration and health, community based participatory research methods, visual research methods; **Significant Publications:** "Bodily Remembering: Memory, Place, and Understanding Latino Folk Illnesses among the Amuzgos Indians of Oaxaca, Mexico," *Culture Medicine and Psychiatry*, 2007; *Women's Health: New Frontiers in Advocacy & Social Justice Research* (with P. Allotey), Haworth Medical Press, 2007; *Espacios de Enfermedad y Sanación: Los Amuzgos de Oaxaca, entre la Sierra Sur y los Campos Agrícolas de Sonora*, El Colegio de Sonora Press, 2003.

I am a medical anthropologist with ten years of experience working at ISU where I direct the Hispanic Health Projects, a CBPR group dedicated to researching local health needs and creating programs to improve the health and well-being of immigrants from Mexico. I have a strong interest in developing visual research methods. I designed a Short Course on Research Methods for the NSF, entitled "Systematic Techniques for Gathering and Analyzing Visual Research Data." I have taught ethnographic filmmaking at Monash and ISU as well as in Mexico with the Maine Media College. Visual research methods will provide new and exciting insights into the theoretical concerns of medical anthropology and film will provide a means for sharing our insights with a wide audience. As a professor who regularly teaches three classes a semester, I am very aware of the pedagogical issues facing professors who teach at under-funded, state institutions where anthropology needs to be explained and justified on a regular basis. I am on the Editorial Board of the journal *Medical Anthropology* and I've been a regular presenter at the AAAs and the SFAA for many years. I would be fully committed to working on the SMA Board. Thank you.

\* Click on the Ballot tab to return to the Ballot

[Next Candidate or Issue Profile >](#)

## Society for Medical Anthropology Election 2009

View details for: **TREASURER 3-year term**

### Rebecca J. Lester



**REBECCA J. LESTER** (PhD, University of California-San Diego, 1998) **Positions Held:** Assistant Professor of Anthropology (2002-present) Washington University in St. Louis; NIMH Postdoctoral Fellow in Culture and Mental Health (1999-2002) University of Chicago; **Interests and/or Activities:** cultures of psychiatry, eating disorders and associated conditions, self-harm; **Significant Publications:** "Brokering Authenticity: Borderline Personality Disorder and the Ethics of Care at an American Eating Disorder Clinic," *Current Anthropology*, 2009 (in press); "Critical Therapeutics in Two Eating Disorders Treatment Centers," *Medical Anthropology Quarterly*, 2007; *Jesus in Our Wombs: Embodying Modernity in a Mexican Convent*, University of California Press, 2005.

As an anthropologist and a clinician, the SMA has been an integral part of my professional development. The SMA is more than a network of scholars; it is also a community of mentors who shape the next generations of medical anthropologists. As I have made the transition from receiving this mentorship to offering it (though one never stops needing guidance!), I have become increasingly involved in AAA governance. I am deeply committed to the future of the SMA as an incubator for rigorous and creative scholarship, fruitful interdisciplinary collaborations, and comprehensive mentoring. I also believe we should work to increase our visibility in the public domain, particularly in the current political environment. I am running for the position of Secretary and am prepared to hit the ground running. I served as SAR Secretary from 2002-2006, and as SPA Program Chair from 2008-2009. Both posts demand exemplary organizational skills, a sense of vision, and the ability to work productively with a range of personalities. I am a diligent worker, a team player, and a brainstormer with the capacity and focus to bring fresh ideas to fruition. I would be honored to put these skills to work for the SMA.

\* Click on the Ballot tab to return to the Ballot

# Society for Medical Anthropology Election 2009

View details for: SECRETARY 3-year term

## M. Cameron Hay-Rollins



**M. CAMERON HAY-ROLLINS** (PhD, Emory University, 1998) **Positions Held:** Assistant Professor (2005-present) Department of Anthropology, Miami University, Ohio;...

[Read More ->](#)

## Jennifer S. Hirsch



**JENNIFER S. HIRSCH** (PhD, Johns Hopkins University, 1998) **Positions Held:** Associate Professor (2004-present) Department of Sociomedical Sciences, Mailman School o...

[Read More ->](#)

\* Click on the Ballot tab to return to the Ballot

## Society for Medical Anthropology Election 2009

View details for: **SECRETARY 3-year term**

### M. Cameron Hay-Rollins



**M. CAMERON HAY-ROLLINS** (PhD, Emory University, 1998) **Positions Held:** Assistant Professor (2005-present) Department of Anthropology, Miami University, Ohio; Assistant Research Anthropologist (2005-present) Center for Culture and Health, University of California Los Angeles, CA; Adjunct Assistant Professor and Assistant Research Anthropologist (2002-2005) Center for Culture and Health, University of California Los Angeles, CA; **Interests and/or Activities:** Social organization of medical knowledge (ethnomedicine, health literacy, online health information), biocultural approaches to health, chronic illness; **Significant Publications:** "Anxiety, Remembering, and Agency: Biocultural Insights for Understanding Illness," *Ethos*, 2009; "Prepared Patients: The Internet and New Rheumatology

Patients" (with RJ Cadigan, D Khanna, CM Strathmann, R Altman, M McMahon, M Kokab, E Lieber, DE Furst), *Arthritis Care and Research*, 2008; *Remembering to Live: Illness at the Intersection of Anxiety and Knowledge in Rural Indonesia*, University of Michigan Press, 2001.

I would be honored to serve as Treasurer of the Society for Medical Anthropology. I bring to the position experience managing the budgets of moderate and large research grants. Working with the board, as Treasurer, I would make fiscal decisions consistent with the society's dedication to promoting the scholarly and collaborative excellence of its growing membership.

\* Click on the Ballot tab to return to the Ballot

[Next Candidate or Issue Profile >](#)

## Society for Medical Anthropology Election 2009

View details for: **SECRETARY 3-year term**

### Jennifer S. Hirsch



**JENNIFER S. HIRSCH** (PhD, Johns Hopkins University, 1998) **Positions Held:** Associate Professor (2004-present) Department of Sociomedical Sciences, Mailman School of Public Health, Columbia University; Assistant Professor (1999-2004) Department of International Health, Rollins School of Public Health; **Interests and/or Activities:** gender, sexuality, and HIV; **Significant Publications:** A Courtship After Marriage: Sexuality and Love in Mexican Transnational Families, University of California Press, 2003; Modern Loves: The Anthropology of Romantic Love and Companionate

Marriage (with Holly Wardlow, Ph.D.), Ann Arbor: University of Michigan Press, 2006; "The Inevitability of Infidelity: Sexual Reputation, Social Geographies, and Marital HIV Risk in Rural Mexico (with Sergio Meneses, Brenda Thompson, Mirka Negroni, Blanca Pelcastre, and Carlos del Rio), American Journal of Public Health, 2007.

For many of us, the Society for Medical Anthropology plays an important role in our professional lives, providing spaces in which we can share our work with colleagues and learn from one another. I particularly value the opportunities SMA creates to be part of a community of engaged scholars bringing a shared language to diverse theoretical and substantive questions. This provides a welcome contrast to the richly interdisciplinary environment in which I am located, surrounded by treasured colleagues who, for the most part, are focused (as I am) on HIV and social inequality. All of SMA's diverse activities—the website, the listserves, our meetings, the journal—depend on the fiscally-sound stewardship of our shared resources. In other words, without our dues, SMA could not do its work. As the current and former principal investigator of several large NIH-funded research projects, I am comfortable with spreadsheets and budget analyses, and I understand the role that transparent and sound financial management play in helping an organization achieve its objectives. I would be honored to be elected as SMA Treasurer, and promise to do my best to see that the SMA budget is managed in a way best serves the membership.

\* Click on the Ballot tab to return to the Ballot

## Society for Medical Anthropology Election 2009

View details for: EXECUTIVE BOARD SLATE #1 3-year term

### Holly F. Mathews



**HOLLY F. MATHEWS** (PhD, Duke University, 1982)  
**Positions Held:** Professor (1990-present), Associate Professor (1986-1990) East Carolina University;  
**Interes...**

[Read More ->](#)

### Marsha B. Quinlan



**MARSHA B. QUINLAN** (PhD, University of Missouri, 2000) **Positions Held:** Assistant Professor (2007-present), Instructor (2005-2007) Department of Anthropology, Wash...

[Read More ->](#)

\* Click on the Ballot tab to return to the Ballot

## Society for Medical Anthropology Election 2009

View details for: **EXECUTIVE BOARD SLATE #1 3-year term**

### Holly F. Mathews



**HOLLY F. MATHEWS** (PhD, Duke University, 1982)  
**Positions Held:** Professor (1990-present), Associate Professor (1986-1990) East Carolina University;  
**Interests and/or Activities:** illness decision making, cultural models, cancer support groups;  
**Significant Publications:** "Cancer Support Groups and Health Advocacy: One Size Doesn't Fit All," In *Confronting Cancer: Metaphors, Inequality and Advocacy* (McMullin and Weiner eds.), SAR Press, in

press; "Increasing the Use of Mammography among Older, Rural, African American Women: Results from a Community Trial" (with JoAnne Earp, PhD), *American Journal of Public Health*, 2002; "Influence of Socioeconomic and Cultural Factors on Racial Differences in Late-Stage Presentation for Breast Cancer" (with D.R. Lannin, MD), *Journal of the American Medical Association*, 1998.

The new buzzword in academic administration and public policy is the "scholarship of engagement." Broadly defined, this type of scholarship engages faculty in academically relevant work that also meets community needs. Community is considered to include diverse audiences external to academic campuses, many of which are involved in collaborative efforts to advance the public good. I, like many SMA members, have been doing this kind of scholarship for a long time. The insights we gain from working at the grass roots level along with the data we collect are going to be of crucial importance as our country attempts to address the well-being of people during this economic crisis and the viability of our current health insurance system. Unfortunately, many of our findings never reach the external publics involved in policy-making. Reforms will be made regardless of our input, but I think a priority for SMA is to make sure the collective voices of our members and of the communities they represent are included in the process. In recent years, SMA has made great strides in reaching out to international colleagues to address global health issues. I think we need to initiate a similar process on the domestic front by exploring ways to link our findings with those of our practicing colleagues in other disciplines so that these can be disseminated in forms accessible to legislators, policy makers and community health advocates.

\* Click on the Ballot tab to return to the Ballot

[Next Candidate or Issue Profile >](#)

## Society for Medical Anthropology Election 2009

View details for: **EXECUTIVE BOARD SLATE #1 3-year term**

### Marsha B. Quinlan



**MARSHA B. QUINLAN** (PhD, University of Missouri, 2000) **Positions Held:** Assistant Professor (2007-present), Instructor (2005-2007) Department of Anthropology, Washington State University; Assistant Professor (2002-2005) Department of Anthropology, Ball State University; Counselor (2001-2002) Hawaii Department of Education, W. Hawai'i District;

**Interests and/or Activities:** family health, ethnomedicine, coordinator for Washington State University's Master's International Program in Environmental and Public Health Anthropology combining field research with Peace Corps service;

**Significant Publications:** Human Lactation, Pairbonds and Alloparents: A Cross-Cultural Analysis (with Robert Quinlan), Human Nature, 2008;

Modernization and Medicinal Plant Knowledge in a Caribbean Horticultural Village (with Robert Quinlan), Medical Anthropology Quarterly, 2007; From the Bush: The Front Line of Health Care in a Caribbean Village, Wadsworth -Cengage Learning, 2004.

I am honored to be a candidate for the SMA Executive Board. I believe that upcoming US health initiatives (including national health care reform, empowerment of individuals with disabilities, and global health security) position medical anthropology to enjoy increased visibility and importance. The public's primary portal to our field is the SMA website, which has been an increasingly useful tool for society news and networking. As a board member, I will work to enhance the SMA website's utility for promoting medical anthropology to interested extra-disciplinary visitors (potential students, collaborators, employers and other funders). I offer the membership a subordinate scholar's perspective for the Board with fresh experience in developing a career in the precarious roles of part-timer, Instructor, "trailing spouse," and Assistant Professor. I am committed to SMA as a vehicle for recognition and exchange, and I welcome the opportunity to devote my care and energy to the SMA community.

\* Click on the Ballot tab to return to the Ballot

## Society for Medical Anthropology Election 2009

View details for: EXECUTIVE BOARD SLATE #2 3-year term

### Vincent E. Gil



**VINCENT E. GIL** (PhD, UCLA, 1975; Postdoc, Masters & Johnson Institute/Institute for Reproductive Biology, 1980-82) **Positions Held:** Distinguished Profess...

[Read More ->](#)

### Robert T. Trotter II



**ROBERT T. TROTTER, II** (PhD, Southern Methodist University, 1976) **Positions Held:** Chair (2009-present) Department of Anth...

[Read More ->](#)

\* Click on the Ballot tab to return to the Ballot

## Society for Medical Anthropology Election 2009

View details for: **EXECUTIVE BOARD SLATE #2 3-year term**

### Vincent E. Gil



**VINCENT E. GIL** (PhD, UCLA, 1975; Postdoc, Masters & Johnson Institute/Institute for Reproductive Biology, 1980-82) **Positions Held:** Distinguished Professor of Medical Anthropology (2001-present); Adjunct Professor of Nursing (2007-present), Vanguard University of Southern California; Professor of Medical Anthropology (1982-2001), Vanguard University; Professor of Anthropology (1975-1982), Vanguard University. **Interests and/or Activities:** HIV/AIDS epidemiology/prevention (1990-present); international/cross-cultural HIV/AIDS medical education, directing clinical teaching teams (Caribbean, China, 1993-2006); medical technology transfers across cultures. **Significant Publications:**

"Facilitating the development of an HIV/AIDS clinic in a Chinese provincial multispecialty hospital: What's culture got to do with it?," Presentation at the Joint Meeting of the Society for Applied Anthropology and the Society for Medical Anthropology, 2008; *Rapid Immunosorbent Assays: Introduction to Rapid Testing and Laboratory Efficacies*, DiTan Hospital Press, 2006; "Empowerment rhetoric, sexual negotiation, and Latinas' AIDS risk: Research implications for prevention health education," In *Sexual and Reproductive Health Promotion in Latino Populations* (I.Torres and G.P. Cernada eds.), Baywood Publishers, 2003.

Medical anthropology in the 21<sup>st</sup> century emerges as a potent agent of research and application, destined to engage even wider audiences and further merge disciplinary efforts. The SMA is pivotal to the successes of those who labor in areas of health, illness, healthcare delivery, and related venues. As Member at Large, I would strive to assist the Society in fulfilling its goals, particularly help in pooling its resources, fostering broader dialogue, and moving Society services to further assist its membership in their productive work. I bring past experience as an SfAA Board member and over 25 years of academic and applied medical anthropology with an international focus. An engaged medical anthropology is essential for global health. This requires consistently evolving support services and arenas for discussion and dissemination of the work being done. The splendid work of the SMA should be enabled further, "to inspire path-breaking work in our next 50 years". I hope to contribute whole-heartedly to that end if elected.

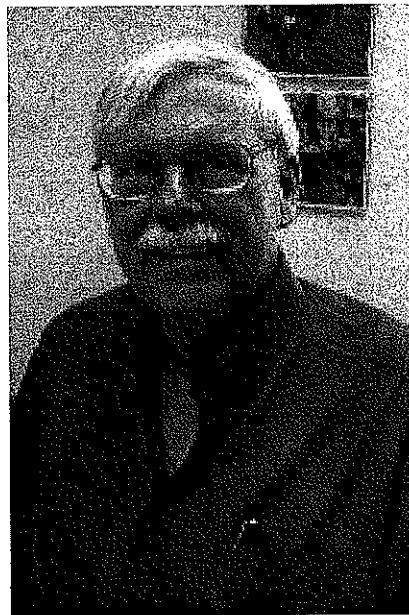
\* Click on the Ballot tab to return to the Ballot

[Next Candidate or Issue Profile >](#)

## Society for Medical Anthropology Election 2009

View details for: **EXECUTIVE BOARD SLATE #2 3-year term**

### Robert T. Trotter II



**ROBERT T. TROTTER, II** (PhD, Southern Methodist University, 1976) **Positions Held:** Chair (2009-present) Department of Anthropology, Northern Arizona University Arizona; Regent's Professor (1995-present) Northern Arizona University; Professor and Chair (1985-1995) Department of Anthropology, Northern Arizona University; **Interests and/or Activities:** cross-cultural health care systems research, traditional healing, disabilities, HIV/AIDS, Alcohol, Drug Abuse, integrated health management, clinical translation science. **Significant Publications:** Ethics in Anthropological Research and Practice (with Linda Whiteford), Wadsworth, 2008; Partnering for Performance: Collaboration and Culture from the Inside Out (with Elizabeth K. Briody), Roman and Littlefield Publisher, 2008; Disability and Culture: Universalism and Diversity

(with Seattle Ustun, T. Bedirhan, Somnath Chatterji, Jerome E. Bickenbach, Robin Room, Jurgen Rehm, Shekhar Saxena), Hogrefe and Huber Publishers, 2001.

I am at a point in my career where I have received a large number of positive benefits from my membership in the Society for Medical Anthropology. I would like to engage in some classic reciprocity through service back to the organization. My career includes a (sometimes hectic) blend of academic employment, community engagement, basic research, praxis, and entrepreneurial activities. I have authored (or co-authored) approximately 130 scholarly publications, media productions and one successful patent application. I am currently Chair of an Institutional Review Board as a result of pursuing proactive engagement with regulatory agencies on ethics issues that are designed to protect cross cultural and anthropological research interests. I have worked for governmental agencies through personnel exchange programs and for corporations as a contract employee. I have pursued virtually every funding source (federal, state, local, foundation, corporate, international, etc) available to anthropologists, and serve as a grant reviewer for federal agencies, foundations, state government, and corporations. My anthropological praxis has focused on improving cross cultural health care systems and health care policy, developing new models for community collaborative partnerships, and reducing health disparities. I would like to contribute this overall experience and serve as a utility infielder for the SMA.

\* Click on the Ballot tab to return to the Ballot

## Society for Medical Anthropology Election 2009

View details for: EXECUTIVE BOARD SLATE #3 3-year term

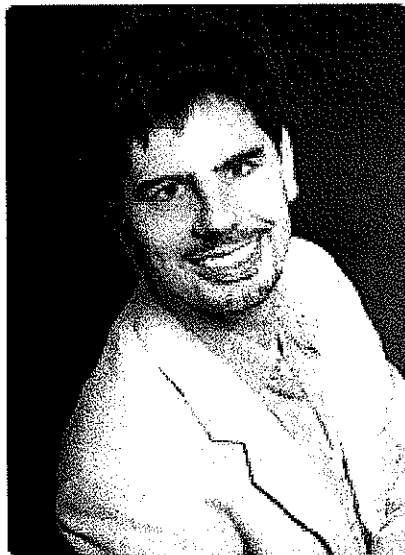
### P. Sean Brotherton



**P. SEAN BROTHERTON** (PhD, McGill University, 2004)  
**Positions Held:** Assistant Professor of Anthropology (2008-present) Yale University; Assistant Professor of...

[Read More ->](#)

### Christopher Jones



**CHRISTOPHER JONES** (PhD, University of Oxford, 2006)  
**Positions Held:** Founder (2008-present) Formyodds.com, Inc.; Director, Bilateral Collaborations (2007-present...)

[Read More ->](#)

\* Click on the Ballot tab to return to the Ballot

## Society for Medical Anthropology Election 2009

View details for: **EXECUTIVE BOARD SLATE #3 3-year term**

### P. Sean Brotherton



**P. SEAN BROTHERTON** (PhD, McGill University, 2004) **Positions Held:** Assistant Professor of Anthropology (2008-present) Yale University; Assistant Professor of Anthropology (2006-2008) Michigan State University; Social Sciences and Humanities Research Council of Canada Postdoctoral Fellow (2004-2006); Faculty Lecturer in Anthropology and International Development Studies (2003-2004) McGill University; **Interests and/or Activities:** medical anthropology, anthropology of medicine, the state, science, and the body; **Significant Publications:** "We need to think like capitalists but continue being socialists:" *Socialist Entrepreneurs, Medicalized Subjectivities, Emergent Capital, and Socialist Entrepreneurs in Post-Soviet*

*Cuba, American Ethnologist*, 2008; *Anthropologie et mondes socialistes et (post-)/socialistes* (Guest Editor with Sabrina Doyon), *Anthropologie et sociétés*, 2008; *Macroeconomic Change and the Biopolitics of Health in Cuba's Special Period*, *Journal of Latin American Anthropology*, 2005.

This is a critical moment for medical anthropology. More universities in the U.S. and abroad are seeking to expand and strengthen their core curricula through the integration of medical anthropology as well as to establish and build vital linkages between anthropology and medicine, global health and public health. This is a moment in which the SMA is equipped to promote a "cosmopolitan" mandate that will both increase the relevance of medical anthropology within the University, within the discipline and beyond, as questions of health move us to serve different publics. A cosmopolitan mandate would include attracting a more diverse scholarly audience that challenges and redefines both traditional disciplinary boundaries and eschews North-South power differentials. Over the next couple of years, I would like to see the SMA expand considerably by sponsoring more Special Interest Groups, to do so in languages other than English, and to address a broader range of debates related to health, medicine, science, and the body. Key to the vision of creating a truly international organization is working to expand our membership pool, which must happen in tandem with the important collaborative work of highlighting the longstanding and emergent scholarship of medical anthropology to a wider audience.

\* Click on the Ballot tab to return to the Ballot

[Next Candidate or Issue Profile >](#)

## Society for Medical Anthropology Election 2009

View details for: **EXECUTIVE BOARD SLATE #3 3-year term**

### Christopher Jones



**CHRISTOPHER JONES** (PhD, University of Oxford, 2006) **Positions Held:** Founder (2008-present) Formyodds.com, Inc.; Director, Bilateral Collaborations (2007-present) Center for Study of Multiple Births; Faculty Member (2007-2008) Johns Hopkins University; Health Economist (2003-2007) Centre for Outcomes Research and Effectiveness, University College London; Project Lead (2005-2006) Bertarelli Foundation Research Award, Switzerland; **Interests and/or Activities:** fertility differentials, medical anthropology, assisted conception, human behaviour, medical tourism, estimating health migration, personalised risk of chronic disease; **Significant Publications:** Ethical and Legal Conundrums of Procreation, International Journal of Gynecology, 2007; Medical Tourism and Reproductive

Outsourcing: the Dawning of a New Paradigm for Healthcare (with LG Keith), International Journal of Fertility and Women's Medicine, 2006; Zygotic Splitting Rates after Single-Embryo Transfers in In Vitro Fertilisation (with I Blickstein and LG Keith), New England Journal of Medicine, 2003.

**Platform Statement:** Dr. Jones combines over ten years in academic, government and health-business research to offer a unique perspective. He received his doctorate and master's degrees from Oxford University and has published extensively in peer-reviewed journals. As director of health economics and outcomes research, Chris has demonstrated the ability to manage teams as well as multiple ongoing projects, typically comprising multi-disciplinary teams of researchers and analysts, and annual revenues in excess of > \$2mm. In early 2003, he presented a report - first to then-British Chancellor Gordon Brown and then in the House of Commons, that led to policy changes to the maximum allowable number of transferred embryos during the course of a woman's in vitro fertilisation treatment. The Times in London reported that Jones' report induced immediate action by the Human Fertilisation and Embryology Authority but divided fertility doctors: half viewed this as a good policy from a public health vantage point, the other half viewed the move as over-regulation in personal affairs. Regardless, Jones showed in a co-authored paper that was published in the New England Journal of Medicine that twins are six-times more likely to occur following in vitro fertilisation, compared with natural conceptions, even when only one embryo was implanted.

\* Click on the Ballot tab to return to the Ballot